



# Phonak ComPilot and Samsung Bluetooth pairing guide

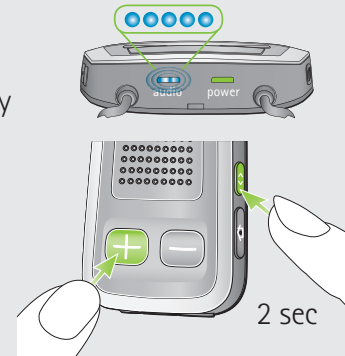
PHONAK

life is on

1. Charge and turn on the mobile phone and ComPilot.
2. Place them next to each other.

## 3. Prepare ComPilot for pairing

- Press and hold the Connect  and Volume  buttons simultaneously for 2 seconds until the Audio indicator starts to rapidly blink blue.
- Start the pairing process on the phone as described below.
- Please consult your phone's user guide if you need more information.



## 4. Prepare the mobile phone for pairing

Find the connectivity settings of the phone. With most models, the following navigation applies. The **Bold** terms might be different depending on the exact phone model.


### Pairing older models

- Select **Menu > Connectivity > Bluetooth**
- Ensure Bluetooth is turned **On**
- Scroll right to highlight **Paired Devices**
- Select **Options > New paired device**
- Wait until **Phonak ComPilot** is found
- Select the **Phonak ComPilot**
- Enter the PIN code **0000** (4 zeros)
- Select **OK > Yes (Authorization) > Yes (Connect)**

### Pairing smartphone (touchscreen)

- Touch **Applications**
- Scroll to and touch **Settings > Wireless & networks > Bluetooth settings**
- Ensure Bluetooth is turned **On**
- Touch **Scan devices**
- Wait until **Phonak ComPilot** is found
- Select **Phonak ComPilot** in the list of devices
- Enter the PIN code **0000** (4 zeros)
- Select **OK**

## 5. End of pairing

- After successful pairing, the ComPilot Audio indicator will stop rapid flashing blue.
- Additionally a headset symbol  may appear on the main screen of your phone.
- After 2 minutes the ComPilot will automatically exit from pairing mode. If step 4 was not completed before, simply start the pairing mode on ComPilot again as described in step 3.

